

COMMUNITY POST

AWASAK WIYASIWEWIN



In This Issue

WHERE WE STARTED	- 2
WHERE WE STARTED CONTINUED	- 3
COMMUNITY NEEDS ASSESSMENT	- 4
COMMUNITY ENGAGEMENT TEAMS	- 5
LOOKING FORWARD	- 8

Message from KTC-CFS

Text & Photos provided by KTC-CFS Staff & Contractors

KTC - CFS

The information provided in our newsletters is for all three founding First Nation communities. The goal of the community post is to provide updates to the members of each Nation as we work towards implementing the Awasak Wiyasiwewin(Children's law).

KTC - CFS recognizes that each Nation is unique and has its own challenges. Each Community and its members have full discretion on the types of services and programs they would like to implement under the new Awasak Wiyasiwewin.

WHERE WE STARTED

Awasak Wiyasiwewin is a Member-driven initiative. For over a year, hundreds of Members from each First Nation participated in our community engagement and consultation processes. We were able to outline members' priorities for child and family services delivery and the principles that should govern this new law.

Community engagement teams, a research committee, and a law development committee with representation from each community dedicated countless hours to support the Member-driven process. Members were also invited to participate in First and Second Readings of the Act, providing feedback that contributed to 17 improved drafts prior to the final version of the Act passing at its third and final reading



“

Our nation and our ancestors had traditional systems of culture, law and knowledge that ensured the well-being and effective protection of children for thousands of years. We have taken an important step to carry on that legacy.
- Chief Laboucan

“

Under the Awasak Wiyasiwewin, we will focus on prevention. We will identify those that are at risk and we will provide services to the parents, children, (and) families, and support them to ensure that no child is ever removed from their family except as a last resort.
- Chief Okemow



Over the past year of meeting with the community members, a lot of personal experiences with the provincial system were shared. As well as old stories about traditional parenting. Under the Awasak Wiyasiwewin, we have an opportunity to significantly improve the outcomes of our communities. By learning from the mistakes of the old child welfare system and remembering the traditional parenting methods of our Elders; we can establish and reinforce a foundation for healthy families.

During our community sessions, Elders were vocal about the cautions when making deals with the government, “we can’t go in with blind faith.” Elders were also vocal about the need to, “do right by our children.” We are so thankful for the advice and the guidance provided by our community Elders. We are truly blessed to have them take on an active role in this process.

“

“Passing Awaśak Wiyasiwêwin into law represents an historic step forward on our path to reconciliation, self-determination, and a better and brighter future for our children and families.-Chief Sawan

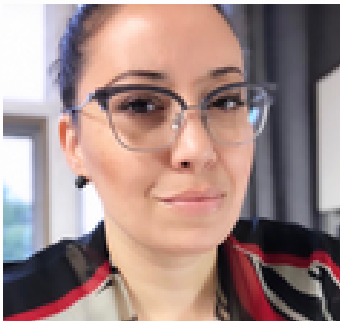
As we move strategically through the next phases of implementing the Awasak Wiyasiwewin, we need to refer back to the community engagement sessions and be reminded of what was said by the Elders and members of the founding First Nations. We collectively agree that the old system wasn’t working, and together we need to continue to push for a better and brighter future for our children and families.



Community Needs assessments

Over the past five months, the executive teams have been busy with the preliminary work for getting the coordination agreement and fiscal agreements in place. Drafts have been prepared based on the community engagement sessions held last year. To finalize these plans as well as to properly develop the programs and services for each community we need a clear picture of the community needs.

KTC-CFS will be conducting a community needs assessment for each founding First Nation. To assist in the community needs assessment process; KTC-CFS has hired a contractor who will work with the community engagement teams to gather and compile all the information needed for the assessment.



Chrystal Hill comes with 23 years of experience in the Human Services and Social Work field. She holds an Advanced Graduate Degree in Social Work from the University of Victoria and is currently working on completing her Ph.D. Chrystal is a Cree woman and worked with several First Nations across Alberta in the area of governance, policy, practice and program development. Chrystal is passionate about advancing our Nehiyaw/Indigenous Social Welfare programs and policies that best serve our children, youth and families that result in greater outcomes. She is honoured to be doing this work with the founding Nations.

Community Engagement Teams

The Community Engagement teams are led by Krista Auger. Krista is a proud Lubicon member and has been working with KTC-CFS for the past three years. Krista has her diploma in Social work and is currently finishing up her Degree.

Shianne McDermott works alongside Krista and Chrystal to support the community engagement teams with their communication initiatives. Shianne has over ten years of experience in marketing and communication and has been working with the KTC-Nations in various capacities for the past six years.

Each community has its own team of local members who will be collecting information and answering any questions. Most of the team members are the same individuals as last year. The team members' contact information is provided on the following pages.

Together we will work to keep the communities updated and involved as much as possible. Please watch for postings for the upcoming community engagement sessions your input is vital as we move forward. Thank you.

Loon River Team



Alanna Noskey
alanna.noskey@gmail.com
780-239-1819

Pricilla Letendre
persilla.letendre@hotmail.com
780-649-0223

Chloe Cardinal
cardinal_03@icloud.com
780-649-4558

**If you have any questions, or comments
about the Awasak Weyasiwewin or the
survey please contact these community
members.**

Lubicon Lake Band Team



Dinese Ominayak/Laboucan
den.ominayak40@hotmail.com
780-649-5382

Wendy Gladue
wendy.gladue@lubiconlakeband.ca
780-219-5533

Jenine Laboucan
yla@lubiconlakeband.ca
780-219-9943

**If you have any questions, or comments
about the Awasak Weyasiwewin or the
survey please contact these community
members.**

Peerless Trout Team



Elder Flora Cardinal
floracardinal2021@yahoo.com
780-649-0675

Andrea Noskiye (Trout)
andrea.noskiye@yahoo.ca
780-649-4418

Krista Yellowknee (trout)
kristayellowknee@yahoo.com
780-649-6760

Elizabeth Cardinal (peerless)
elizabeth.cardinal@ptfn.net
780-649-5365

Candice Noskey (trout)
cnoskiye88@outlook.com
780-649-4415

Linda Noskie (peerless)
Linda.Noskiye@ptfn.net
780-649-1480

**If you have any questions, or comments
about the Awasak Weyasiwewin or the
survey please contact these community
members.**

MOVING FORWARD

With the support of our Elders and communities, we continue to make history as we work to implement the Awasak Weyasiwewin. Together as the founding Nations, we are able to meet the needs of our members and provide them with opportunities so that they may choose to live a healthy and prosperous life for generations to come.



KTC CHILD & FAMILY SERVICES
BOX 279
Red Earth Creek, Alberta
T0G 1X0

Phone # 780-767-2116

Fax # 780-767-2120

Email: c92info@ktccfs.ca

"To promote safe, healthy families, within their traditions, language, family & community." - KTC-CFS
Vision statement

